



ANALYZING DESIGNING DELIVERING

it's all about people



WE
»»

EVALUATE, DESIGN, AND ENHANCE
THE PLACES PEOPLE WANT TO
BE AND THE SYSTEMS THAT MAKE
THOSE PLACES BETTER.



ABOUT US

it's all about a great team »»

Our company roots go back more than 75 years to when Wightman got its start serving the civil engineering and surveying needs of municipalities in southwestern Michigan. Since then, our client base has grown and so has our expertise. Today, in addition to serving government and municipal entities, we specialize in the commercial, energy, and education sectors throughout Michigan, Indiana, and the Great Lakes region. As new technologies have emerged, our services have evolved, too. Our ability to provide in-house civil engineering, surveying, architectural design, GIS, interior design, landscape architecture, planning, and reality capture makes us the single-source planning, design, and consulting partner for many of our clients.

We've worked hard since our founding in 1946 to earn the trust of our clients and become one of the most prominent engineering, surveying, and architectural firms in the region. This trust was recognized when we were named the 2016 Large Firm of the Year in the state of Michigan by the American Council of Engineering Companies.

As an employee-owned company, we have a relentless commitment to creating an experience for our clients that goes beyond the job at hand. We are driven to create partnerships where we become part of your team — a trusted adviser who brings original, effective, and practical solutions to the table. We are also passionate about giving back to the communities we serve through corporate and personal community involvement and through support of activities that enhance the quality of life for everyone.



ARCHITECTURE
CIVIL ENGINEERING
SURVEY
GIS
INTERIOR DESIGN
LANDSCAPE ARCHITECTURE
PLANNING
REALITY CAPTURE



ARCHITECTURE

a passion for aesthetics, function, and practicality »»

Architecture is a mix of art and science. Art creates emotional impact through design. Science delivers functional, healthful environments by applying the latest research on ergonomics, acoustics, thermal comfort, lighting, and energy efficiency. When it all comes together, you have attractive spaces where people can be engaged and productive.

How do we do this at Wightman? Our licensed architects use Design Thinking, a process that allows us to learn about you, define success based on your criteria, and use your input throughout the process to create a design that brings your vision to life. We apply this versatile process to every project — from commercial, retail, and education to municipal, residential, and more.

Do you have a unique site challenge that goes beyond architectural design? No problem. Our Architecture Studio is backed up by Wightman civil engineers, surveyors, and reality capture pros who can step in with their expertise at a moment's notice.

ARCHITECTURE SPECIALTIES

- Facility Condition Assessments
- Feasibility Studies
- Pre-Design Services
- Design Services
- Construction Administration & Management Services
- Educational Facility Planning
- Residential Design
- Industrial Facility Design
- Sustainable Design
- Rendering & Animation
- Urban Design & Master Planning



CIVIL ENGINEERING

looking out for you and your project—start to finish »»

When you see fresh asphalt, we see drivers traveling on safer roads. When you see a water treatment plant, we see children drinking clean water. When you see a trail system, we see families hiking and biking together.

From planning and design through construction management and inspection, Wightman engineers focus on the impact your transportation, water and sewer system, and land development projects will have on people. We do this by learning about your needs and helping you avoid pitfalls. We think ahead, beyond the project at hand, to maximize your resources, and we use our experience to keep your project on schedule and on budget.

With an extensive support team, we take a holistic approach to project design and management. This builds value for you and creates a sense of comfort knowing we are your trusted advisers.

ENGINEERING SPECIALTIES

- Transportation
- Site Development
- Specialty Design Projects (Streetscape, Roundabouts, Drains, etc.)
- Bridges, Dams & Culverts
- Parks & Recreation
- Grant & Funding Administration
- Studies
- Permitting
- Community-wide Asset Management Plans
- Materials Testing
- Water
- Wastewater
- Stormwater Management
- Hydrogeologic



SURVEY

details checked, verified, and never assumed »»

Real estate is one of your largest assets. As your trusted adviser, our job is to help you protect your investment through reliable, accurate, and informed land surveying services.

As a developer, general contractor, utility provider, or landowner, you need to know everything is right before the transaction is complete or site work begins. We apply our technical expertise and passion for detail to every survey, construction project, parcel division, and related task to provide you with accurate information needed to avoid costly mistakes.

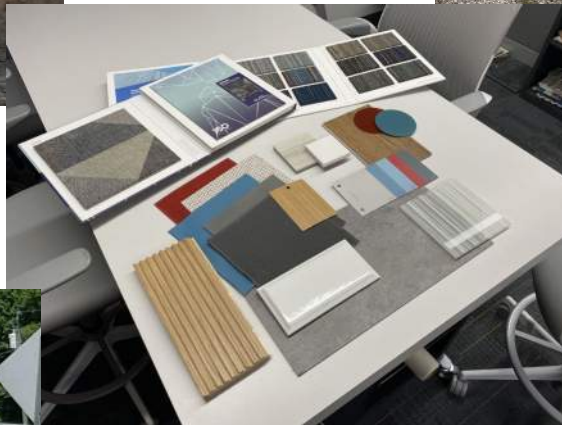
The Wightman story of land survey excellence stretches back to our founding in 1946. Over more than 75 years, we have built a legacy of precision work that has shaped decades of residential, commercial, utility, and industrial land development throughout southwest Michigan and northern Indiana for our neighbors and friends. Our surveyors are among the most respected in the region, licensed to perform your survey work in Michigan, Indiana, Ohio, and Texas.

We are also pre-qualified by the Michigan Department of Transportation for road design survey work.

SURVEY SPECIALTIES

- Design
- Construction
- Elevation Certificates
- Land & Easement Legal Descriptions
- Boundary
- Land Title
- GPS Services
- Utility
- Mortgage Inspections





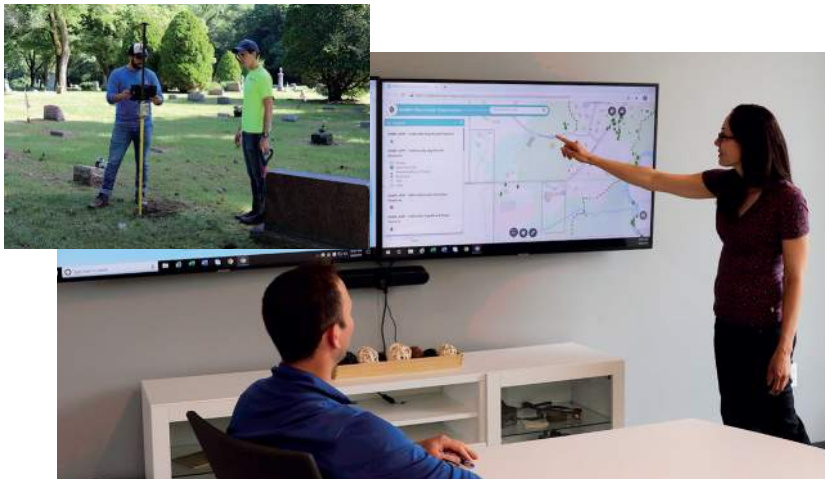
GIS

decision making power »»

Imagine the value of dynamic data that guides money-saving preventative maintenance, informs capital investment planning, averts costly downtime stemming from equipment failure, and even saves lives during emergencies. These are a few of the benefits of partnering with the Wightman GIS team.

GIS SPECIALTIES

- GIS Services
- Online Interactive Mapping
- Asset Management
- Database Deployment & Management
- Training, Ongoing Maintenance & Support
- Infrastructure Locating & Mapping
- ArcGIS ONline Implementation
- Data Compilation & Analysis
- Custom Data Processing & Automation Tools
- Crowdsourcing Data Solutions



INTERIOR DESIGN

more than paint deep »»

Our process is rooted in the science of how environments influence people. It's about understanding the dynamics of open floor plans, private work spaces, and co-worker collaboration. It's all about knowing how furnishings contribute to student learning. It's about having insight into how layout contributes to an unforgettable customer experience. It's about creating spaces to meet your needs.

INTERIOR DESIGN SPECIALTIES

- Programming/Needs Assessment
- Schematic Design
- Space Planning
- Finish & Material Selection
- Furniture Layout & Selection
- Construction Drawings
- Renderings & Animation



LANDSCAPE ARCHITECTURE

connecting people and the outdoors »»

Think about where you enjoy time outdoors. Strolling down a tree-lined downtown sidewalk with a steaming cup of coffee in hand. Channeling your inner weekend warrior as you hike and bike that nearby trail. Watching your kids play soccer at the new athletic field over by the school. These places—the ones that lie between the buildings that architects plan and the roads that engineers design—are what Wightman’s Landscape Architects are passionate about.

LANDSCAPE ARCHITECTURE SPECIALTIES

- Parks & Recreation
- Streetscape Design
- Green Infrastructure
- Landscape Plans
- Site Analysis
- Historical Preservation Plans



PLANNING

unlock the power of a plan »»

You have to know where you want to go in order to get there. Then, you need a plan to make it happen. As simple as that sounds, a solid plan requires exploration, insight, knowledge, communication, and a lot of listening. Wightman planners excel at this. We can help you promote growth, wisely manage resources, and create places where people thrive.

PLANNING SPECIALTIES

- Master Plans
- Economic Development
- Feasibility Studies
- Facility Condition Assessments
- Data Compilation & Analysis
- Community Engagement
- Bond Issue Assistance
- Contractual Services
- Urban Design & Master Planning
- Educational Facility Planning



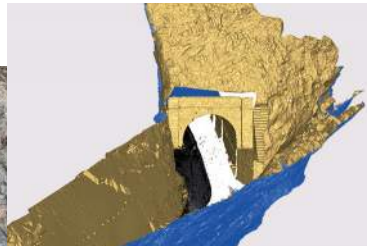
REALITY CAPTURE

3D precision and detail »»

A new level of informed problem solving is available for your design, construction, and building management projects. The Wightman reality capture experts deliver 3-dimensional modeling information and solutions that save money, reduce costly delays, improve safety, and protect the investment you've made in your facilities. Reality capture documents existing, or "as-built", conditions of buildings, infrastructure, mechanical systems, and surrounding environments through stationary and drone-based, high-definition laser scanning (HDLS) technologies.

REALITY CAPTURE SPECIALTIES

- High-definition Laser Scanning
- Drone Mapping
- Building Information Modeling (BIM)



WE
»»

PROVIDE A MULTIDISCIPLINARY APPROACH TO CLIENT-CENTERED SOLUTIONS WITH PRACTICAL INDUSTRY EXPERTISE.

We are driven to create partnerships where we become part of your team—a trusted adviser who brings original, effective, and practical solutions to the table, especially in these key expertise areas.

COMMERCIAL

Wightman's goal is to work with you to create well-planned functional design, introduce innovation, and focus on details that deliver value to your business. By pairing your vision with our design knowledge, we deliver a series of unique design solutions. Together, we review, evaluate, and fine-tune the options into a plan that will help your business prosper.

GOVERNMENT

Our company was founded on service to municipalities. It has been one of our strengths for more than 70 years. We become an extension of your team by understanding the nuances of your operation and by applying our expertise to help you make practical, long-term plans that maximize resources and deliver value to your constituents.

EDUCATION

Wightman planners and designers help you make the most of unique opportunities and solve real challenges facing your educational organization. Our goal in educational facility planning is to enhance student performance while reducing operational costs. To do this, we build empathy, define success, and iterate/innovate.

ENERGY

What sets Wightman apart is that we take the time to understand our clients, your processes, and how your internal communication channels work. With this level of attention to client operations, we are able to facilitate, streamline, and expedite how the work gets done—making your job easier.





WE
»»

**WORK CLOSELY WITH EACH OTHER AND
COLLABORATE ACROSS OUR FOUR OFFICES.**

*Contact any of our offices today to find out how
we can assist you with your project.*



1670 Lincoln Rd. (M-40)
Allegan, MI 49010
269.673.8465



2303 Pipestone Rd.
Benton Harbor, MI 49022
269.927.0100



6415 Mutual Dr.
Fort Wayne, IN 46825
260.424.5362



109 S. Church St.
Hastings, MI 49058
269.945.3668



433 E. Ransom St.
Kalamazoo, MI 49007
269.327.3532



1405 N. Michigan St.
Plymouth, IN 46563
574.936.3469



2646 Hamstrom Rd.
Portage, IN 46368
219.706.9177



306 S. Washington Ave., Suite 200
Royal Oak, MI 48067
947.941.4650



1402 Mishawaka Ave.
South Bend, IN 46601
574.233.1841



14328 Northline Rd., Suite A
Southgate, MI 48195
734.583.4650



it's all about people

